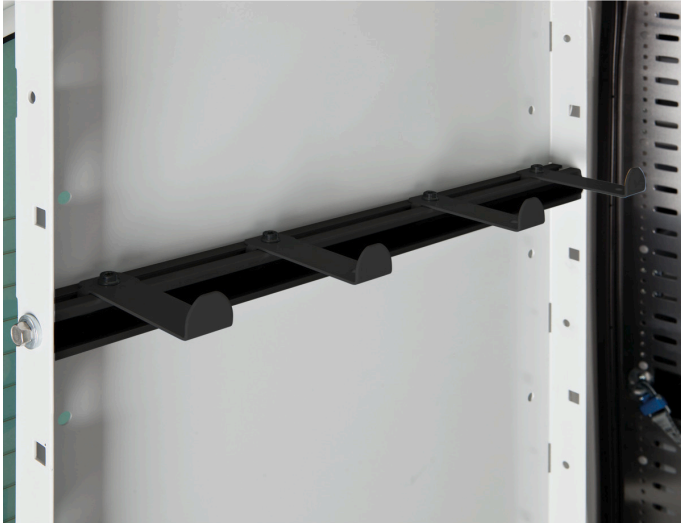


Long handled tool holder fixing bar

Material no.: 1000002517 | Matchcode: FIX SH HTÜ | EAN code: 4045294244491



- » accessories for the long handled tool holder rear door
- » incl. four hooks
- » with rubber profile
- » simply mounting onto shovel hook rear door

Materials & Colour

Material:	Steel
Colour:	Sortimo Grey White

Dimensions

External dimensions:	530 x 115 x 90 mm
----------------------	-------------------

Technical details

Weight:	1,11 kg
---------	---------

Description

The fixing bar is a practical extension to the long handled tool holder rear door. It is simply mounted onto the punched out holes at the side of the long handled tool holder and provides for an organised and secure transport of long handled equipment, such as shovels or brooms. In addition cables, ropes or thin hoses can be hung up onto the hooks of the fixing bar. You will notice that you save a lot of time with the fixing bar, as your equipment is, on the one hand quickly at hand and on the other hand stowed away and secured in the vehicle again just as quickly.

We reserve the right to make changes in the interest of technical progress, as well as correcting printing errors and mistakes. Pictures are similar, decorative material not included. With the publication of this data sheet, previous editions lose their validity. Version: 21.12.2023