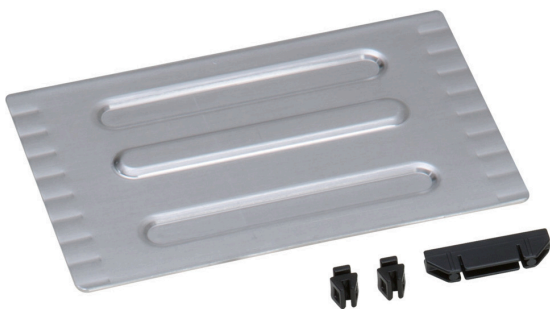


### slot divider 145x93 for metal case WM 330/331

Material no.: 5267702 | Matchcode: TB WM 330/145 | EAN code: 4014599267702



- » Divider for metal case WM 330 and 331
- » enables individual sub-division in the depth.
- » simply mounting
- » Simplified working through one-handed operation
- » individually adaptable interior

#### Materials & Colour

Material:	Steel Aluminium
Colour:	Silver

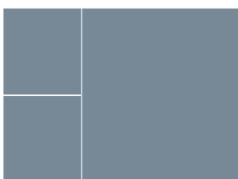
#### Dimensions

External dimensions:	145 x 93 x 2 mm
----------------------	-----------------

#### Technical details

Weight:	0,07 kg
---------	---------

#### Structure & Function



### slot divider 145x93 for metal case WM 330/331

Material no.: 5267702 | Matchcode: TB WM 330/145 | EAN code: 4014599267702

#### Description

The slot divider 145x93 mm serves to sub-divide the metal case WM 330 and 331 across the width. With this divider you can sub-divide your metal case 330 in the depth in combination with a slot divider 309x93 mm (Ref. No. 5267740) - the slot divider in this case also sub-divides across the width. To this end you simply insert the supplied plastic adapter in the desired position in the recesses of the slot divider and subsequently insert the divider. The metal case 331 comes equipped with two slot dividers meaning the divider 145x93 mm only needs to be positioned in the required spot via the supplied plastic adaptors in order to create further subdivisions in the depth. The compartments provide for order and overview ability within the metal cases WM 330 and 331.

We reserve the right to make changes in the interest of technical progress, as well as correcting printing errors and mistakes. Pictures are similar, decorative material not included. With the publication of this data sheet, previous editions lose their validity. Version: 29.02.2024