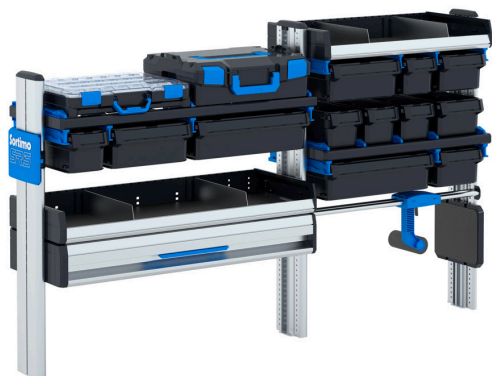


Xpress 28 Block-M1-B-LI-Pro

Material no.: 1000020565 | Matchcode: XPRESS 28 | EAN code: 4014599559692



- » flexibly extendible
- » Cost-savings due to long service life

Materials & Colour

Material:	Aluminium Steel ABS PA6
Colour:	Silver Black Blue


Dimensions

External dimensions:	1.759 x 384 x 1.057 mm
----------------------	------------------------

Technical details

Weight:	57,67 kg
---------	----------

Accessories

	Material no.	Description	Matchcode	EAN code
	1000020566	Xpress 29 Block-M1-B-RE-Pro	XPRESS 29	4014599559715

Xpress 28 Block-M1-B-LI-Pro

Material no.: 1000020565 | Matchcode: XPRESS 28 | EAN code: 4014599559692

Suitable vehicles

Manufacturer	Model	Wheelbase in mm	Style of roof	Side door	Type of drive
Volkswagen	ID-Buzz Cargo 2022	2989	H1	right	Electro

Description

The loading space of the vehicle is ideally used with the SR5 concept. The compact side profiles require considerably less space than the frame construction of conventional van racking systems. In addition, ProClick is compatible with the side profiles so that tool bags or SR5 accessories can be hooked into the ProSafe perforations without using tools. Variation in the component depths and installation position means that the van racking system ideally adapts to the contour of the vehicle.

We reserve the right to make changes in the interest of technical progress, as well as correcting printing errors and mistakes. Pictures are similar, decorative material not included. With the publication of this data sheet, previous editions lose their validity. Version: 25.03.2024